



**THE KENNEL CLUB**

*Making a difference for dogs*

# Introducing JUDGES COMPETENCY FRAMEWORK



Yulia Titovets / The Kennel Club ©

[WWW.THEKENNELCLUB.ORG.UK/JCF](http://WWW.THEKENNELCLUB.ORG.UK/JCF)

## To all Judges and Aspiring Judges



A new system has been developed for the education, approval and listing of every level of judge, from those who aspire to judge, right through to open show judges and those who go on to award Challenge Certificates and judge championship show groups, and Best in Show.

The **Judges Competency Framework** (JCF) will go 'live' in January 2019, run alongside the current system for a three-year transition period, and be fully operational from January 2022.

The JCF will provide a logical sequence of learning, practising, peer observation and examination and will cater for all judges at every level – it outlines a judge's career path providing clear criteria for each stage. Each level will also confirm judging privileges, again making it clear to the judge and the show society who is eligible to judge which breed, and the number and the type of classes which may be judged.

The Kennel Club's established online **Find A Judge** listing will be extended to provide reports of all eligible judges across all breeds and for all types of show.

The Framework will be administered through the Kennel Club's modern online education platform – **The Kennel Club Academy** (KCA). KCA is easy to access, available 24 hours a day and requires only a small annual subscription. As far as possible this will provide an efficient and 'paperless' way for judges to record their experience on their personal KCA account whether this be judging appointments or details of seminars attended, breed assessments passed and other education undertaken.

This booklet provides an overview of the JCF, and includes an explanation of the various levels, the key dates you need to be aware of, a table showing where you will slot into the framework during the transition and what you will need to do to continue judging.

A handwritten signature in black ink, appearing to read 'Jeff'.

**Jeff Horswell**

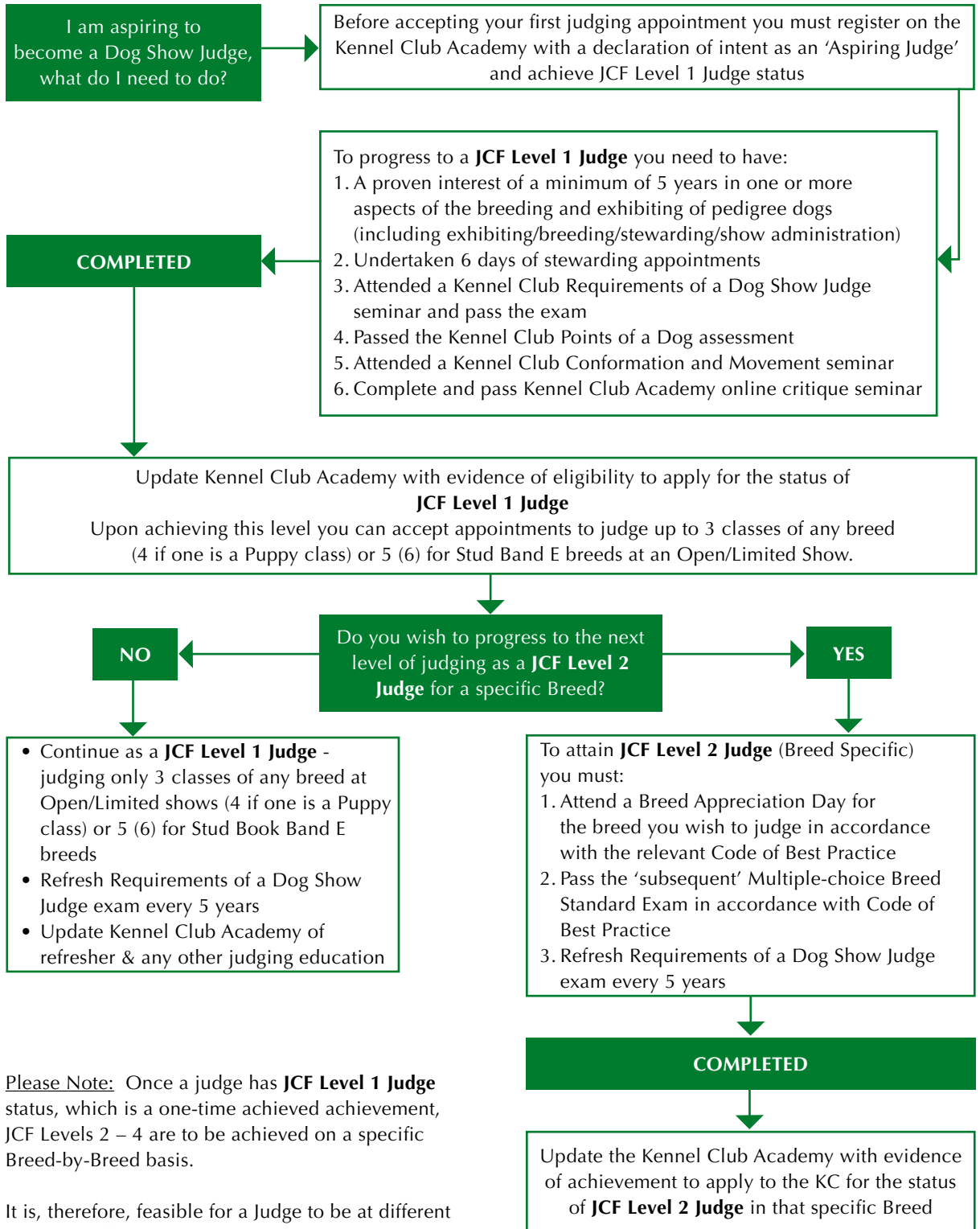
**Chairman – Judges Competency Framework Working Party**

**A list of Frequently Asked Questions can be found at:**

[www.thekennelclub.org.uk/JCF-FAQS](http://www.thekennelclub.org.uk/JCF-FAQS)

otherwise please email [jcf@thekennelclub.org.uk](mailto:jcf@thekennelclub.org.uk) with your query

## Guide to being a Dog Show Judge - Levels 1-2



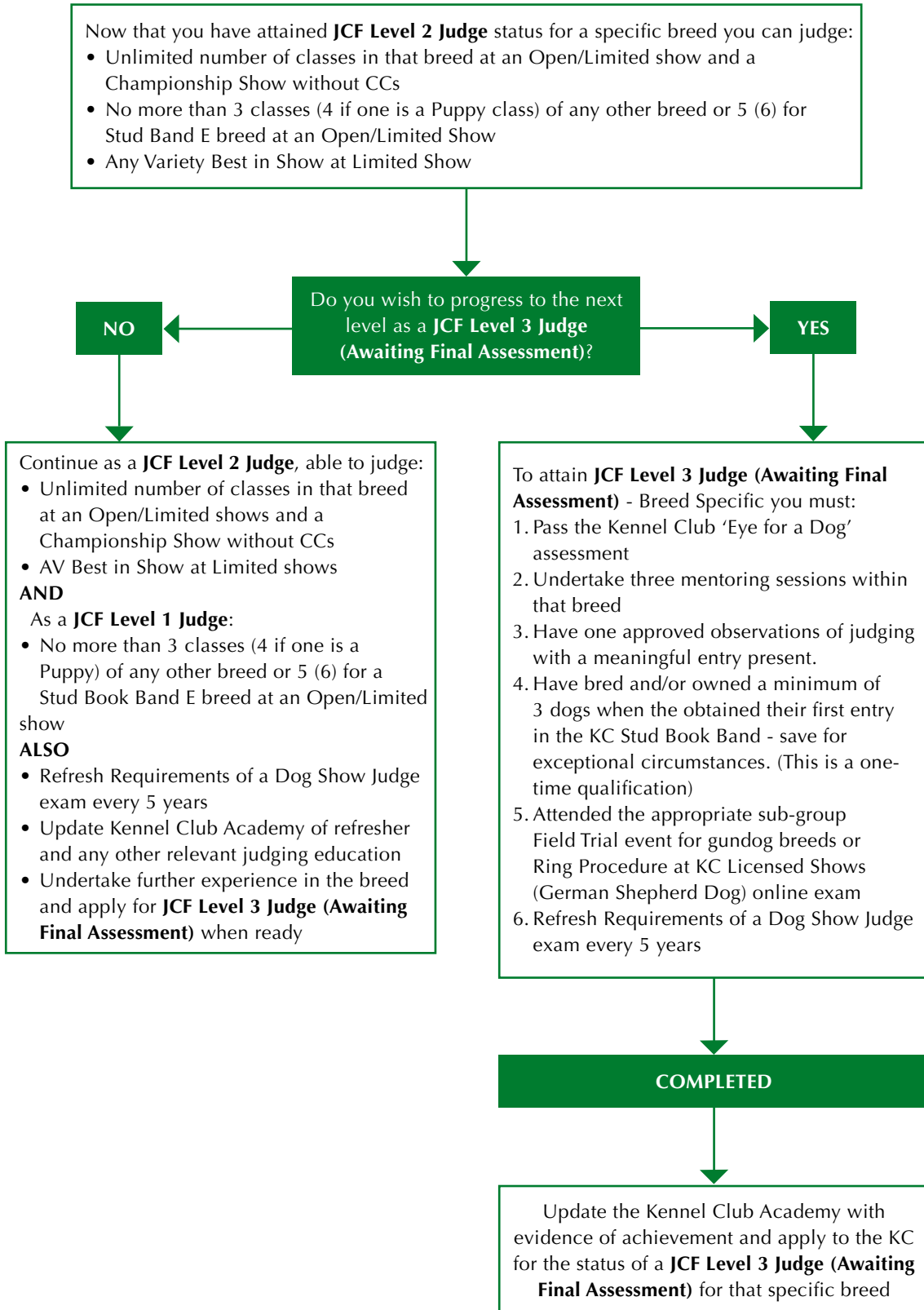
Please Note: Once a judge has **JCF Level 1 Judge** status, which is a one-time achieved achievement, JCF Levels 2 – 4 are to be achieved on a specific Breed-by-Breed basis.

It is, therefore, feasible for a Judge to be at different levels in different Breeds at the same time.

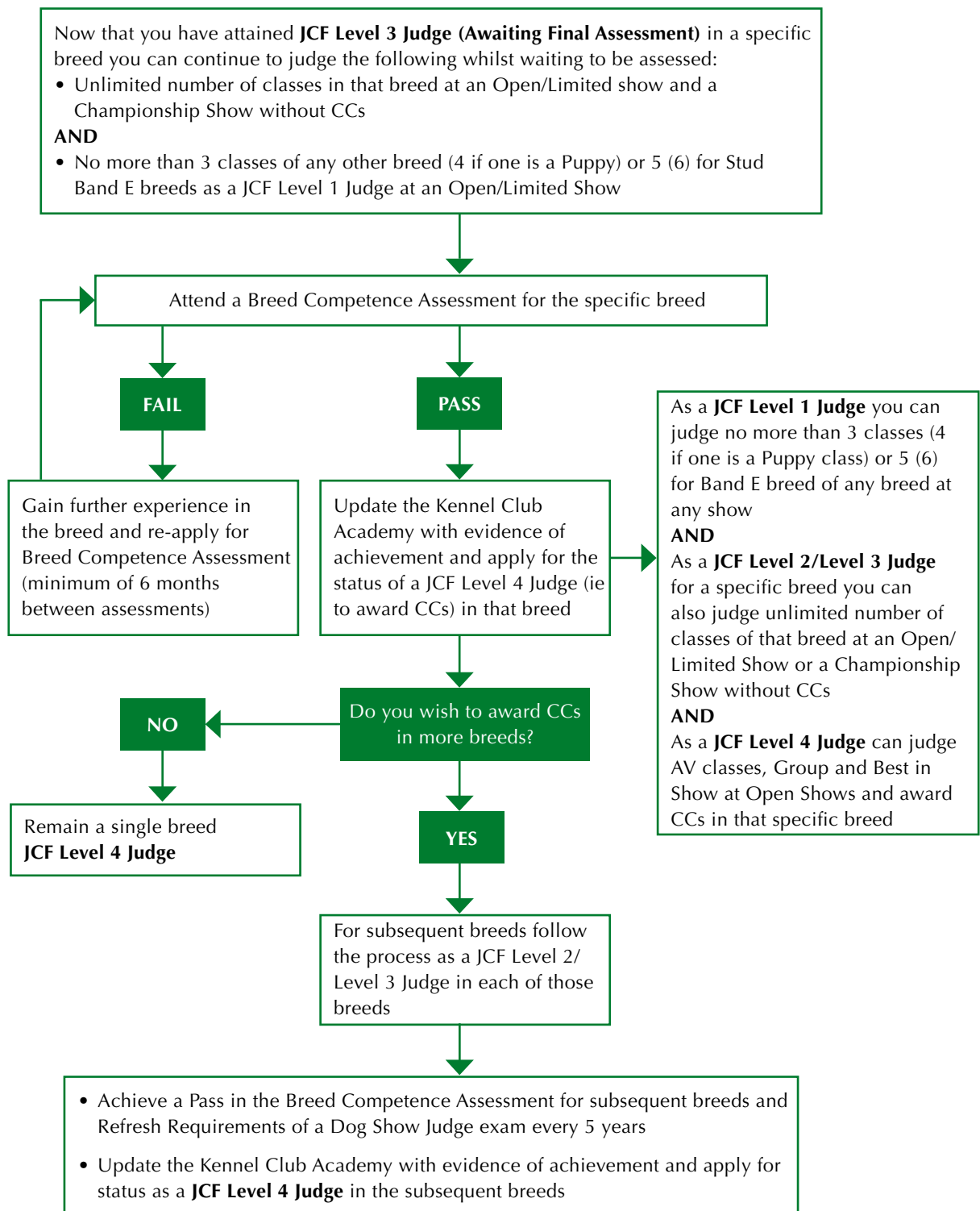
Judges will be able to upload evidence in late 2018.



## Guide to being a Dog Show Judge - Levels 2-3



## Guide to being a Dog Show Judge - Levels 3-4



Information on how to progress as a Group, Best in Show and All-Breeds Judge is available at [www.thekennelclub.org.uk/JCF](http://www.thekennelclub.org.uk/JCF)

## TIMETABLE

<b>2017</b>	
<ul style="list-style-type: none"> <li>• Judges Competency Framework (JCF) announced</li> <li>• Pilot scheme undertaken with 14 breeds covering all groups and Stud Book Bands trialling scheme</li> <li>• First Breed Appreciation Days held and mentoring sessions begin</li> </ul>	
<b>2018</b>	
<ul style="list-style-type: none"> <li>• Online seminars and breed videos added to Kennel Club Academy, judges able to begin uploading evidence to their accounts</li> </ul>	
April	First 'Eye for a Dog' pilot assessments
By June 1	Breeds appoint Breed Education Co-ordinators (BECs)
July 15	Breed Education Co-ordinator Day at KC Building, Stoneleigh
November	Second 'Eye for a Dog' pilot assessments
<b>2019</b>	
<ul style="list-style-type: none"> <li>• JCF goes 'live'</li> <li>• JCF Level 1 requirements implemented</li> <li>• Breed clubs to support a minimum of two supported entry shows</li> </ul>	
<b>2019-2021</b>	
<ul style="list-style-type: none"> <li>• Transition period with JCF and current system running alongside existing system</li> <li>• All breeds to hold a Breed Appreciation Day at least every two years</li> </ul>	
<b>2022</b>	
<ul style="list-style-type: none"> <li>• JCF fully implemented</li> </ul>	
<b>2024</b>	
<ul style="list-style-type: none"> <li>• All judges must have undertaken and passed a Requirements of a Dog Show Judge exam and every 5 years thereafter</li> </ul>	

## Are YOU ready for JCF?

### If you are NOT currently a Challenge Certificate judge...

- You will need to take the mandatory Kennel Club seminars – Points of a Dog, Conformation and Movement and Requirements of a Dog Show Judge and supply certificates for these
- Gather evidence of stewarding

*Do not upload these until the JCF system is live and publicised by the Kennel Club*

### If you ARE currently a Challenge Certificate judge...

- Ensure you have successfully passed the Requirements of a Dog Show Judge exam by 1 January 2024

### All judges intending to register on JCF...

- Ensure you have an email address that is not shared by anyone else intending to register on JCF. All judges registered on JCF must have a unique email address. Activation codes will be emailed to all established CC judges who have judged in the last ten years to assist with registering with JCF in due course. The KC will announce when this facility is available.



## TRANSITION TABLE

Current status	Requirements
<p><b>Not on a C list</b> (not attended any seminars)</p>	<ul style="list-style-type: none"> <li>• Register on KCA at entry level</li> <li>• Undertake all JCF Level 1 requirements by 1 January 2019 to be able to continue to judge up to 3(4) or 5(6) classes of any breed at Kennel Club licensed shows from 1 January 2019</li> <li>• Must pass the refresher Requirements of a Dog Show Judge exam every 5 years<sup>1</sup></li> <li>• Progress to JCF Level 2 as required for each breed they wish to judge</li> </ul>
<p><b>Not on a C list</b> (has previously passed/attended some or all of the previous mandatory requirements)</p>	<ul style="list-style-type: none"> <li>• Register on KCA at entry level</li> <li>• Complete all JCF Level 1 requirements to be able to continue to judge up to 3(4) and 5(6) classes of any breed at Kennel Club licensed shows from 1 January 2019</li> <li>• Previously passed Points of the Dog assessment and attendance at a Conformation and Movement seminar led by a KC Accredited Trainer remain valid and can be carried forward</li> <li>• Must pass the refresher Requirements of a Dog Show Judge exam every 5 years<sup>1</sup></li> <li>• Progress to JCF Level 2 as required for each breed they wish to judge</li> </ul>
<p><b>On a C list</b> (has previously passed/attended some or all of the previous mandatory requirements)</p>	<ul style="list-style-type: none"> <li>• Register on KCA at entry level or JCF Level 1</li> <li>• Complete all JCF Level 1 requirements to be able to continue to judge up to 3(4) and 5(6) classes of any breed at Kennel Club licensed shows from 1 January 2019</li> <li>• Previously passed Points of the Dog assessment and attendance at a Conformation and Movement seminar led by a KC Accredited Trainer remain valid and can be carried forward</li> <li>• Must pass the refresher Requirements of a Dog Show Judge exam every 5 years<sup>1</sup></li> <li>• Progress to JCF Level 2 as required for each breed they wish to judge</li> </ul>
<p><b>On a B list</b> (has previously passed/attended some or all of the previous mandatory requirements and has attended a Breed Appreciation Day and passed a breed standard exam)<sup>2</sup></p>	<ul style="list-style-type: none"> <li>• Register on KCA at JCF Level 1 once completed outstanding criteria (see para 5 above)</li> <li>• Complete JCF Level 2 requirements<sup>2</sup> to be able to continue to judge more than 3(4) and 5(6) classes of this breed at Kennel Club licensed shows from 1 January 2022</li> <li>• Apply to progress to JCF Level 2</li> <li>• Must pass the refresher Requirements of a Dog Show Judge exam every 5 years<sup>1</sup></li> <li>• Progress to JCF Level 3 as required</li> </ul>



Current status	Requirements
<b><u>On a A3 list</u></b>	<ul style="list-style-type: none"> <li>• Apply to register on KCA at JCF Level 3 and register all JCF Level 1 and JCF Level 2 requirements, including the critique seminar (only to be taken once) to be able to continue to judge more than 3(4) and 5(6) classes of these breeds at Kennel Club licensed shows from 1 January 2022</li> <li>• Must complete all JCF Level 3 requirements including passing a Kennel Club Breed Competence Assessment for relevant breed or breeds, before applying to progress to JCF Level 4</li> <li>• The mentoring and observation requirements do not need to be achieved</li> <li>• Must pass the refresher Requirements of a Dog Show Judge exam every 5 years<sup>1</sup></li> </ul>
<b><u>On a A2 list</u></b>	<ul style="list-style-type: none"> <li>• Register on KCA at JCF Level 4 to be able to accept an appointment to award Challenge Certificates and to be able to judge more than 3(4) or 5(6) classes of this breed at Kennel Club licensed shows from 1 January 2022</li> <li>• Must pass the refresher Requirements of a Dog Show Judge exam every 5 years<sup>1</sup></li> </ul>
<b><u>On an A1 list</u></b> (judge has previously awarded Challenge Certificates to one or more breeds)	<ul style="list-style-type: none"> <li>• Activate personal account of KCA<sup>3</sup> as a JCF Level 4 judge to be able to continue to award Challenge Certificates and to be able to judge more than 3(4) or 5(6) classes of these breeds at Kennel Club licensed shows from 1 January 2022</li> <li>• Judges must register at JCF Level 4 for each breed for which they are previously approved to award Challenge Certificates</li> <li>• Judges can be on several levels for a range of breeds at the same time. Existing CC judges are exempt from undertaking the critique seminar and the Eye for a Dog assessment but strongly encouraged to undertake this assessment</li> <li>• Must pass the refresher Requirements of a Dog Show Judge exam every 5 years<sup>1</sup></li> </ul>

<sup>1</sup> If a judge has passed the Requirements of a Dog Show Judge exam within the 5 years prior to the start of the JCF (1 January 2019) this fact needs to be recorded on the KCA. The timescale for taking the refresher exam will start from this date. Any existing CC judge who is to judge a new CC breed during the transition period will be required to pass the refresher exam before undertaking their appointment. Existing CC judges who have not previously had a need to pass this exam will be required to pass the refresher exam before 1 January 2024.

<sup>2</sup> Where a judge has passed a breed specific hands-on assessment it is not necessary to pass the new JCF Level 2 breed standard multiple-choice exam. Where a judge has passed the Points of the Dog assessment and has attended a Conformation and Movement seminar these remain valid under the JCF.

<sup>3</sup> The Kennel Club will create KCA accounts for all currently active Championship Show judges using records already held. From 1 January 2019 judges will be able to activate their personal account by paying their KCA membership fee and verifying their record.

# JUDGES COMPETENCY FRAMEWORK – What education do you need to complete?

Attaining JCF Level 1 is a one-time achievement for a judge. JCF Levels 2-4 are achieved on a breed-by-breed basis. All education must be completed in the order listed below

Level	Education required	How is this delivered?	Who organises this?
1	<ul style="list-style-type: none"> <li>Attend a Kennel Club Requirements of a Dog Show Judge seminar and pass the exam</li> </ul>	<ul style="list-style-type: none"> <li>By a Kennel Club Accredited Trainer with a multiple-choice exam</li> <li>Pre-course learning is available on the Kennel Club Academy</li> </ul>	<ul style="list-style-type: none"> <li>Clubs throughout country with assistance from Accredited Trainers, or the Accredited Trainer directly</li> </ul>
	<ul style="list-style-type: none"> <li>Attend and pass the Kennel Club Points of a Dog assessment</li> </ul>	<ul style="list-style-type: none"> <li>By a Kennel Club Accredited Trainer with assessment</li> <li>Pre-course learning is available on the Kennel Club Academy</li> </ul>	<ul style="list-style-type: none"> <li>Clubs throughout country with assistance from Accredited Trainers, or the Accredited Trainer directly</li> </ul>
	<ul style="list-style-type: none"> <li>Attend Kennel Club Conformation and Movement seminar</li> </ul>	<ul style="list-style-type: none"> <li>By Kennel Club Accredited Trainer. No exam</li> <li>Pre-course learning is available on the Kennel Club Academy</li> </ul>	<ul style="list-style-type: none"> <li>Clubs throughout country with assistance from Accredited Trainers, or the Accredited Trainer directly</li> </ul>
	<ul style="list-style-type: none"> <li>Complete Kennel Club Critique Writing seminar and exam</li> </ul>	<ul style="list-style-type: none"> <li>Online via the Kennel Club Academy (due to be launched in 2018)</li> </ul>	<ul style="list-style-type: none"> <li>Judge completes seminar online via their Kennel Club Academy account</li> </ul>
2	<ul style="list-style-type: none"> <li>Attend a Breed Appreciation Day for the relevant breed and pass a Multiple-choice Breed Standard Exam</li> </ul>	<ul style="list-style-type: none"> <li>A respected breed speaker should deliver the presentation on the breed</li> <li>The exam should be set and marked by the breed club</li> </ul>	<ul style="list-style-type: none"> <li>Each breed club will be required to hold one event at least every two years.</li> <li>BADs must be run in accordance with the Code of Best Practice for the Running of a Breed Appreciation Day (and subsequent Multiple-choice Breed Standard Examination)</li> </ul>
	<ul style="list-style-type: none"> <li>Pass an 'Eye for a Dog' Assessment (this only needs to be done once)</li> </ul>	<ul style="list-style-type: none"> <li>Kennel Club organised assessment</li> </ul>	<ul style="list-style-type: none"> <li>Kennel Club will publish dates of these assessments on the Kennel Club Academy</li> </ul>
	<ul style="list-style-type: none"> <li>Undertake three one-to-one mentoring sessions with three different mentors for the relevant breed</li> </ul>	<ul style="list-style-type: none"> <li>Can take place at shows as a ringside observer, judging special award classes, student judge or breed mentoring event</li> </ul>	<ul style="list-style-type: none"> <li>Breed Education Co-ordinator will pair up mentors and mentees</li> </ul>
3*	<ul style="list-style-type: none"> <li>Be successfully observed judging at a breed club show or breed supported entry</li> </ul>	<ul style="list-style-type: none"> <li>While judging show</li> </ul>	<ul style="list-style-type: none"> <li>Breed Education Co-ordinator will arrange for observer to attend show breed clubs should support a minimum of two shows per year</li> </ul>
	<ul style="list-style-type: none"> <li>Ensure Requirements of a Dog Show Judge exam is passed within/every five years on the Kennel Club Academy</li> </ul>		

Level	Education required	How is this delivered?	Who organises this?
4	<ul style="list-style-type: none"> <li>Attend and pass the Kennel Club Breed Competence Assessment</li> </ul>	<ul style="list-style-type: none"> <li>Practical assessment with five dogs to be placed in a mock class. Assessed by two breed specialists and two non-breed specialists</li> </ul>	<ul style="list-style-type: none"> <li>Kennel Club with the assistance of the Breed Education Co-ordinator and breed supporters</li> </ul>
	<ul style="list-style-type: none"> <li>Ensure Requirements of a Dog Show Judge exam is passed within/every five years on the Kennel Club Academy</li> </ul>		
4 CC Judge	<ul style="list-style-type: none"> <li>Ensure Requirements of a Dog Show Judge exam is passed within/every five years on the Kennel Club Academy</li> </ul>		
5 Group Judge	<ul style="list-style-type: none"> <li>If wishing to proceed to the next Level, will need to undertake the process from JCF Level 2 for each subsequent breed to achieve the threshold requirements</li> <li>Ensure Requirements of a Dog Show Judge exam is passed within/every five years on the Kennel Club Academy</li> </ul>		
6 BIS Judge	<ul style="list-style-type: none"> <li>Ensure Requirements of a Dog Show Judge exam is passed within/every five years on the Kennel Club Academy</li> </ul>		
7 All Breed Judge	<ul style="list-style-type: none"> <li>Ensure Requirements of a Dog Show Judge exam is passed within/every five years on the Kennel Club Academy</li> </ul>		
<p><i>*Have bred and/or owned a minimum of three dogs when they gained first entry in the Kennel Club Stud Book (one time qualification)</i></p> <p><i>*Attend the appropriate sub-group Field Trial event for gundog breeds/Ring Procedure at KC Licensed Shows (German Shepherd Dog Education Programme) online exam</i></p>			



## USEFUL CONTACT DETAILS

**email:** [jcf@thekennelclub.org.uk](mailto:jcf@thekennelclub.org.uk)

**www.thekennelclub.org.uk/JCF**

If you still have questions please email us and we shall respond and include the question in our FAQs for others to learn from your query.

### **Kennel Club Academy**

[www.kcacademy.org.uk](http://www.kcacademy.org.uk)

### **Kennel Club Find A Judge**

[www.thekennelclub.org.uk/findajudge](http://www.thekennelclub.org.uk/findajudge)



**THE KENNEL CLUB**

The Kennel Club  
Clarges Street, London W1J 8AB  
Telephone: 01296 318 540

.....  
[WWW.THEKENNELCLUB.ORG.UK/JCF](http://WWW.THEKENNELCLUB.ORG.UK/JCF)